

Boutique London Lets

London's serviced accommodation specialists

Who are Boutique London Lets?

Boutique London Lets strive to provide 5 star accommodations within the comfort and convenience of centrally located London apartments.

At **Boutique Lets**, our apartments provide more amenities, space and comfort, than a hotel – but at cheaper rates! Our apartments offer two bedrooms, fully functioning kitchens, and comfortable lounge rooms allowing you to discover London without compromising on lifestyle or comfort. Our apartments can accommodate up to six people (some restricted to four) in utmost comfort.

All **Boutique** apartments cater for a broad range of size and budgetary requirements. All our apartments are centrally located and are chosen with locality, convenience, high interior standard and security in mind. As with standard hotels, **Boutique** apartments can be booked on a two nightly, weekly or even monthly basis. We cater equally for tourists (groups or families) and short-to-medium term corporate lets.

Please visit our website for more details: www.boutiquelondonlets.com

Fabulous accommodation:

Each of our properties offers the best value and quality of accommodation possible: We ensure that each apartment offers premiere:

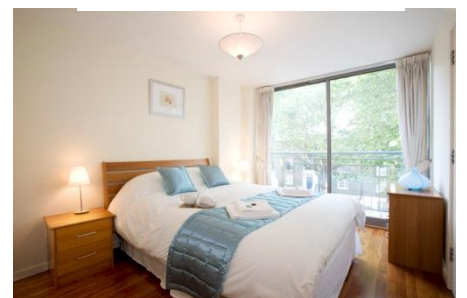
- Touristic location (centrality, access to transport and activities)
- Immediate environment (quality of building, street, neighbours)
- Internal layout, size and decorative quality
- Presentation and comfort – including furnishings and décor
- Safety and security

All apartments are modern, stylishly decorated and offer:

- Fully furnished accommodation.
- Living room, dining area, fully equipped kitchen & two bathrooms.
- Complementary high-speed internet access
- All bedding, towelling, quality linen & basic toiletries provided
- Washing machine, clothes airer & soaps provided.
- Very conveniently located for transport (tube and busses) and set in the heart of Central London.
- Full central heating and (limited flow) hot-water day and night.
- Very quiet and tranquil locations within the centre of London.
- 24 hour a day arrival and departure facility.



The St James' Apartment Kitchen



The Waterloo Apartment bedroom

Boutique London Lets

London's short-stay apartment specialists

www.boutiquelondonlets.com



Boutique London Lets

London's serviced accommodation specialists

The Southwark Penthouse Apartments:

At a glance:

No. of bedrooms:	Two double.
Other:	One bathroom, open-plan kitchen, living room (dining included) & balcony from both bedrooms.
Size:	700sqft / 65 sqm
Underground station:	1,500m to Southwark and Borough Stations
Close to:	Southwark Cathedral, Shakespeare's Globe, Tate Modern, HMS Belfast, London Dungeon, Southbank, Borough Markets & more!
Internet Access:	Yes – broadband.
Décor:	Excellent, modern.
Furnishings:	Excellent, fully furnished.
Further guests:	Potential to sleep 6 guests max.
Location:	SE1 9LX (enter into www.maps.google.co.uk)
Smoking?	No smoking in apartment or building

This chic Penthouse apartment sits atop a seven storey building. **Boutique London Lets** proudly holds the five other apartments within this building. The penthouse apartment is serviced by lift (elevator) access.

It boasts and fantastic location, excellent quality throughout and very modern decor. It is set within a new well built building, and has wide and airy windows and a balcony off both bedrooms. There is one bathroom in this apartment.

The immediate area is close to a swathe of amazing attractions: Southwark Cathedral, Shakespeare's Globe, Tate Modern, HMS Belfast, London Dungeon, Southbank (entertainment precinct), St Paul's Cathedral, Borough Markets and more! All this on your door step.

The apartment boasts excellent furnishings, decor and fittings throughout as well as orthopaedic beds, Egyptian cotton duvet covers and sheets.

It is fully equipped and the bathroom is luxuriously appointed. The kitchen is fully equipped and has all the essentials on-hand to allow self-catering.

We offer free high-speed Internet, flat screen TV/DVD, and designer furniture – all right in the heart of London – making this the premier way to stay in London whether on business or pleasure. This exquisite apartment is the ultimate city living pad, and will impress the most sophisticated of travellers.



Boutique London Lets

London's short-stay apartment specialists

www.boutiquelondonlets.com

Boutique London Lets

London's serviced accommodation specialists

Southwark Apartment indicative rates (per night):

2-3 nights: £214.50

4-7 nights: £183.50

8-13 nights: £167.50

2-4 weeks: £156.75

5+ weeks: from £120.50!

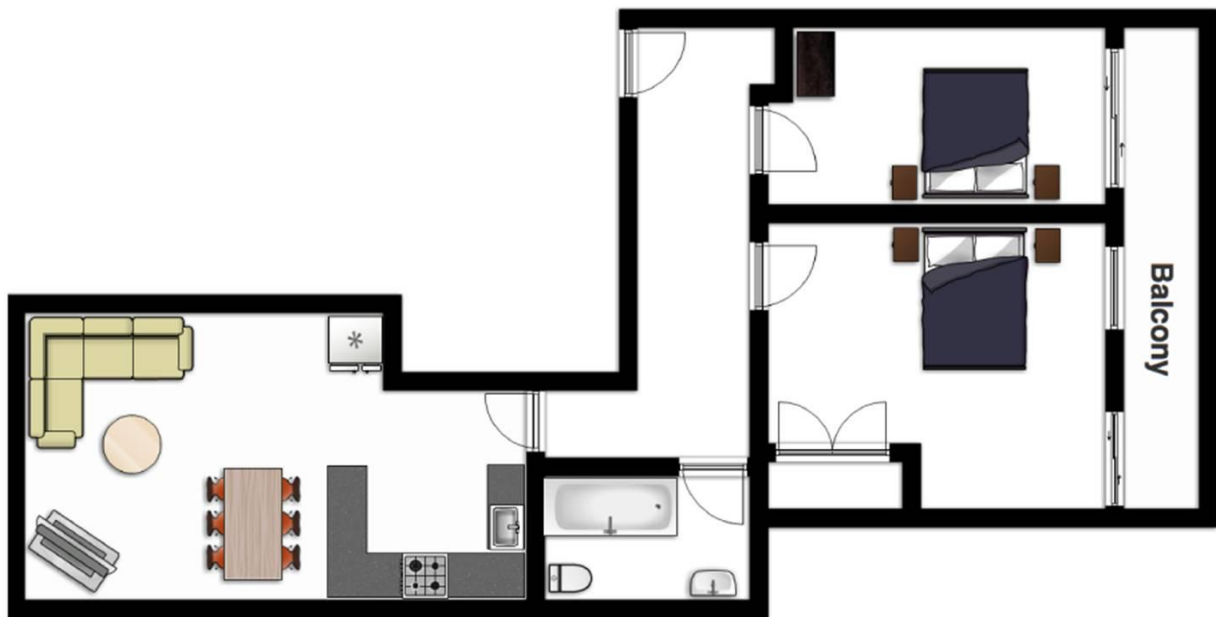
Nightly supplement (over 4 guests): £20 per person per night

Prices shown are base prices. Levies may apply during peak seasons & holidays, discounts may apply in low seasons. Minimum night restrictions may also apply. A 2% transaction fee applies.

The Southwark Penthouse Apartment floor plan:

This is the floor plan for our apartment. It is spacious and fully furnished. Some of the actual furniture (size and placement) may differ to the diagram below.

Apartment size: 65 sqm – 700 sqft



Boutique London Lets

London's short-stay apartment specialists

www.boutiquelondonlets.com

Boutique London Lets

London's serviced accommodation specialists

Southwark Penthouse Apartment photos:

This is a wonderful bright top floor apartment boasting two balconies (and lift access). We have more photos available online: www.boutiquelondonlets.com



Two balconies with views



Excellent living space



All amenities provided



Main bedroom with en suite



Great second bedroom



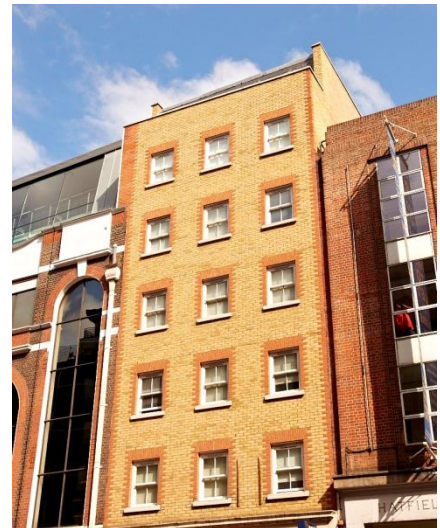
Main bathroom



En suite bathroom



Dining area



Modern secure block



Boutique London Lets

London's short-stay apartment specialists

www.boutiquelondonlets.com



Boutique London Lets

London's serviced accommodation specialists

Optional Extras:

We offer a range of optional services to make your stay more enjoyable and convenient.

-Out of hour's arrival – 10pm-8am:

For your convenience, you will be met at the apartment by one of our greeters, let in, and shown around. This is a complimentary service between the hours of 8am – 10pm (Mon – Sun). There is a small charge out of these hours (between 10pm and 8am) of **£20**. Please advise us of your arrival time at least 48 hours in advance if this is the case.

-House keeping services:

Guests can request to have the apartment cleaned and all linen changed during their stay. Please allow 48hrs notice to arrange: **£50**

-Cot for baby:

A high quality fold-out cot for your baby and assortment of baby blankets and linen. **£5 per night**

-Sofa-bed available (for existing and extra guests):

There is a very comfortable sofa bed available. There is a maximum of six people allowed in this apartment. If a group of four or less people require another bed, then they can hire this. The bed comes with necessary linen and towels. Please advise us if you wish to use this in advance. **£15 per person per night (groups under 4) - £20 per extra person per night (groups over 4).**

-Early check-in or late check-out:

Later check-outs or earlier check-ins can be arranged subject to availability. See below for details. There is a partial stay fee applicable of **£75 per request.**

Please let us know when booking if you require any of these services.

Prices are subject to change – please enquire at time of booking.



Boutique London Lets

London's short-stay apartment specialists

www.boutiquelondonlets.com



Boutique London Lets

London's serviced accommodation specialists

Booking details, terms and conditions:

Check-in and check-out:

Check in time: from 2.30pm
Check-out time: before 10.00am

- **Check in time: FROM 2.30pm – no prior luggage drop-off or storage available.**
Due to the nature of our apartments, you **may not** arrive at the apartment earlier than the arranged check-in time. This includes for luggage drop-off purposes.
- **Early check-in option: EXTRA PAYMENT REQUIRED (booked in advance).**
If you wish to check-in **before 2.30pm but after 10.00 am**, please advise us at the time of booking. **An additional charge of £75 applies. If you desire to arrive any earlier than 10.00am you will need to pay the full tariff for the next night.** We will strive to accommodate you subject to availability – this must be booked in advance.

Early check-ins must be approved and paid for at time of booking. We are unable to accommodate last minute early check-in requests. We are unable to store luggage prior to check-in.

- **Check –out time IS 10.00am – no luggage storage available after departure.**
We ask that you vacate the apartment promptly as our cleaners will require the apartment empty in preparation for the next guest.
- **Late check-out option: EXTRA PAYMENT REQUIRED (booked in advance).**
If you wish to check out **after 10.00am and before 6pm**, please advise us at the time of booking. **An additional charge of £75 applies. If you desire to stay any later than 6pm, you will need to pay the full tariff for the next night.** We will strive to accommodate you subject to availability – must be booked in advance.

Late check-outs must be approved and paid for at time of booking. We are unable to accommodate last minute late check-out requests. We are unable to store luggage after check-out.

Booking reservations and payments:

- Bookings must be reserved with a 20% deposit.
- The **full outstanding amount must be paid TWO weeks prior to arriving** at the apartment. The guest is liable for a £40 late payment fee and/or cancellation of their



Boutique London Lets

London's short-stay apartment specialists

www.boutiquelondonlets.com



Boutique London Lets

London's serviced accommodation specialists

booking if full payment is not received before this time.

- A security deposit of £200.00 is required from all guests. We only take authorisation for this payment and no funds are debited from your account, unless necessary. This is automatically cancelled after checkout after a satisfactory inspection of the apartment/unless in the unlikely event of damage sustained during a guest's stayed.

Payment options:

Payment is accepted only via Google Checkout (2% transaction fee applies). To pay by Google Checkout, we shall email you an invoice from which you can pay easily and securely online. It is a very simple, safe and efficient payment method.

Cancellations:

The 20% booking deposit is non-refundable. The 80% full balance payment is due **TWO WEEKS** before arrival. Feel free to pay the full balance at any time. We reserve the right to cancel your booking if we do not receive full payment two weeks prior to arrival. The full balance will be forfeited if you cancel **only within TWO WEEKS** of arrival. If you cancel before this time, the 80% balancing payment will be refunded.

Luggage Storage:

Unfortunately we provide no luggage storage service either before or after your stay. Due to the nature of the apartments, we do not have access to communal areas or lobbies. Therefore we have no ability to store any of your luggages outside of your booked stay.

Booking price and quote policy:

We reserve the right to change advertised prices without notice. Existing quotes will be honoured under these circumstances. **If you book your apartment, then the price that you have done so at is the price that you will pay** – regardless of future price movements.

Property locations:

If you wish to view the property location on a map, please enter the postcode of the property (see above) into Google Maps UK: www.maps.google.co.uk.

Contact information:

Please email us or visit our website for more details:

Email: info@boutiquelondonlets.com

Web: www.boutiquelondonlets.com



Boutique London Lets

London's short-stay apartment specialists

www.boutiquelondonlets.com

